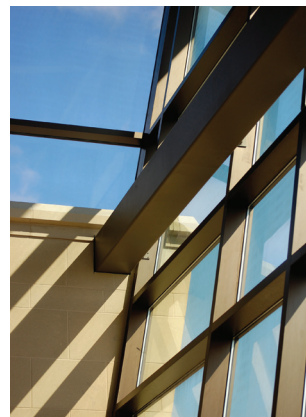


Corporate Classroom

“Learn through experience” and “teach by example” are two goals of Orion’s new technology center in Manitowoc, WI. The 70,000-sq ft center, which opened on Earth Day, shows A/E/C professionals and the general public how Orion’s product line—including light pipes and fixtures—can save energy in real-life applications.

The center houses Orion’s corporate headquarters, but “it’s also a place for people to come and learn about energy, particularly how energy in the future needs to be viewed,” says Orion’s executive vice president Mike Potts. “We wanted the building to have a high-tech look and feel that would make people think about a new paradigm. It’s visible from the moment you walk in.”

Highly visible, most visitors would say, due to the large amount of natural light that floods the ware-



Photos: Copyright 2009 Balance Design

ORION TECHNOLOGY CENTER, MANITOWOC, WI

The Challenge: Teaching clients and the public what the future of energy-saving technology looks like

The Solution: An integrated platform including energy-efficient lamps, daylight harvesting pipes and wireless controls

house-style space through its windows and Orion’s daylight harvesting light pipes that dot the ceiling. “We utilized light from the south with an arched wall that encompasses the sun

as much as possible on all three floors, but also has the architecture to block out the direct sun when it’s at peak during the summer,” explains Potts.

To illuminate areas with no access to the windows, the light pipes are paired with 147-W, four-lamp high intensity fluorescent T8 low- to mid-bay fixtures. During daylight hours, the light pipes collect sunlight from rooftop domes and channel it into the building for direct lighting that resembles an electric luminaire. Sensors connected to the fixtures turn the fluorescent lights on and off according to the available daylight. Each fixture is linked to its own sensor, so that “each area is run as it should be run without degrading the life of the system,” notes Potts.

Combined with the light pipes and energy-efficient fluorescents, the sensor system helps the building “use the least amount of energy to give us the most amount of lighting,” says Potts.

Elizabeth Hall



Orion Energy Systems Inc.
2210 Woodland Drive
Manitowoc, WI 54220
877.204.7540
www.oesx.com